

Using the NetKey Utility for Managing CSI Network Licenses

Copyright © 2013, Computers and Structures, Inc.

The NetKey utility allows the user control over the network licenses for CSI software products. A license can be activated, deactivated and renewed using this tool. NetKey must be run on the server that is managing the licenses. See the document “StandaloneKey Guide” for managing standalone licenses.

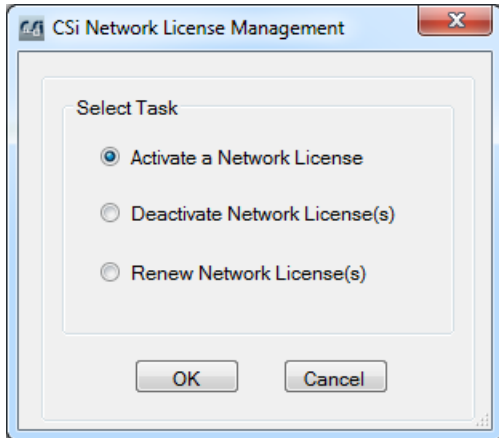
PLEASE NOTE:

The license is locked to multiple locking criteria including Ethernet Address and CPU Info String. Any server changes, affecting any of these locking criteria, including maintenance, repair or reformatting the machine, will cause the license to no longer work and also prevent the license from being deactivated. Please deactivate the license before taking any action that may alter any of these locking criteria.

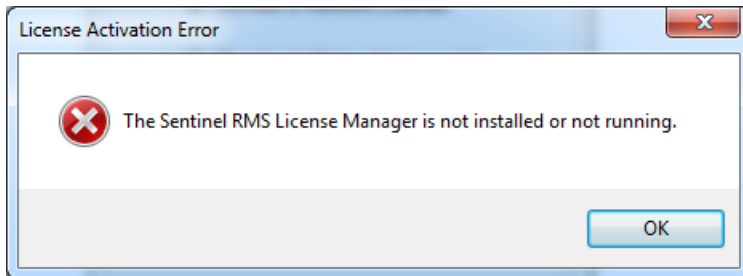
An internet connection is required for activating, deactivating and renewing licenses. If a connection is not found or if one of the required ports is not open, the NetKey utility will terminate, displaying a message notifying the user of the connection requirements.

Running NetKey.exe

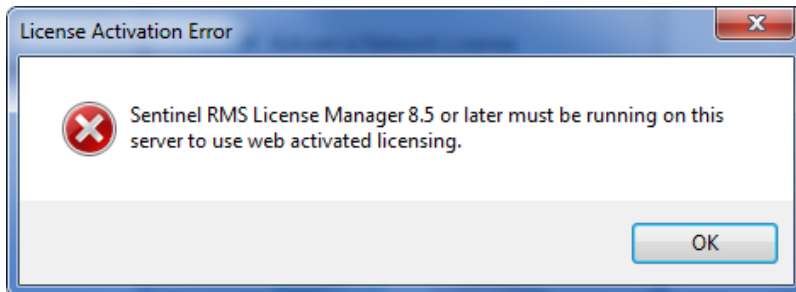
To run NetKey, use the shortcut on the Start menu under Computers and Structures > Sentinel RMS 8.5 Utilities > NetKey, or run NetKey.exe from the folder where the Sentinel RMS 8.5 Utilities have been installed. This brings up the following options:



After clicking the OK button, the utility checks whether the License Manager is running and will terminate if it is not found with the following message:



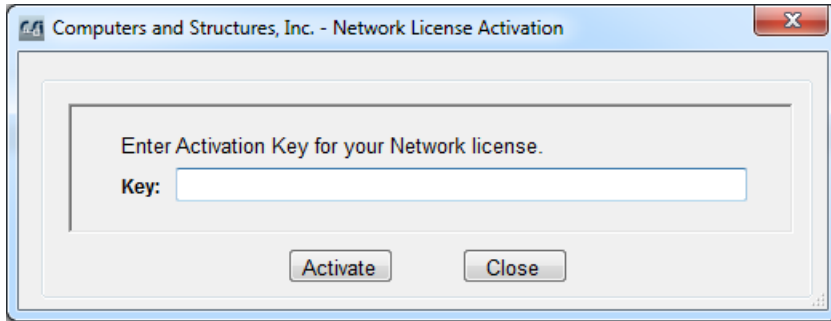
If a version older than License Manager v8.5 is running, NetKey will terminate with the following message:



In both cases, the license cannot be activated on the machine until the License Manager has been updated. Please see the ReadMe file for further instructions on upgrading to License Manager v8.5.

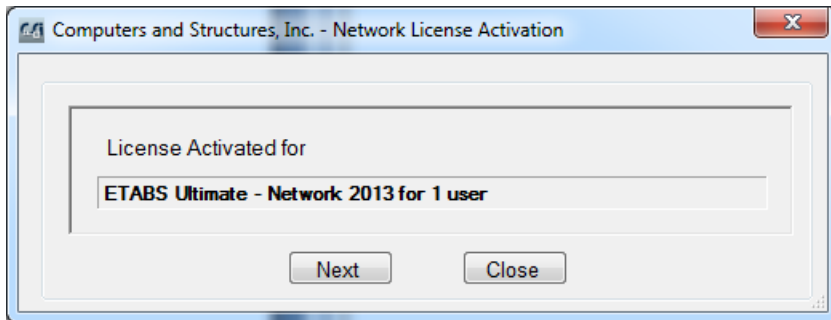
License Activation

If “Activate a Network License” is chosen then the following window appears:

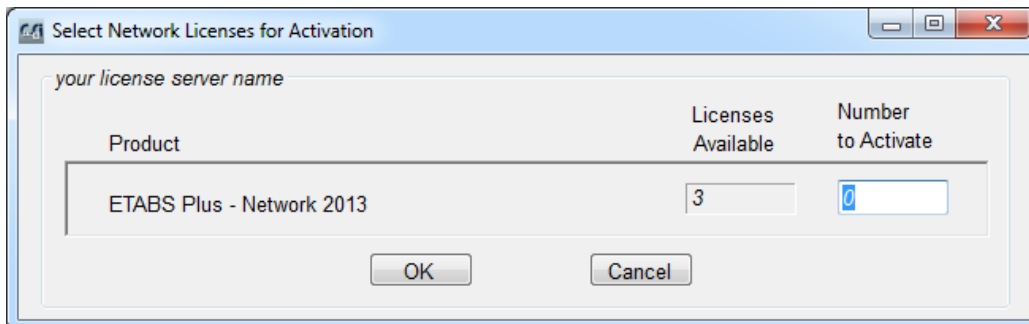


Enter your Activation Key and click Activate.

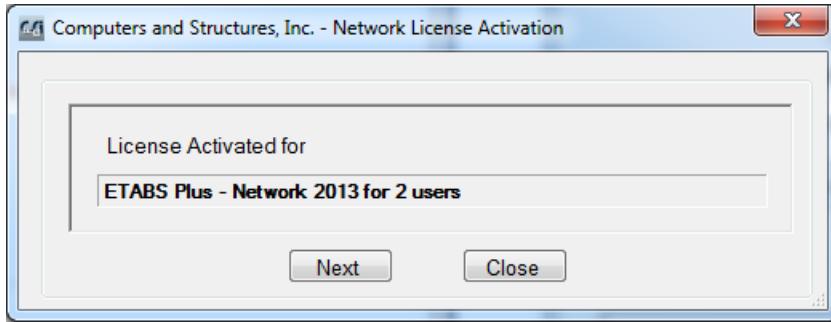
If the Activation Key is valid and for a single license, a confirmation window will appear showing that the license has been activated:



If the Activation Key is valid and for more than one license, a window will appear so you can choose how many licenses to activate.



Enter the number you want to activate on this server and click OK. In this example, the following window shows that 2 of the 3 licenses were activated. The 3rd license is available for activation on another server:



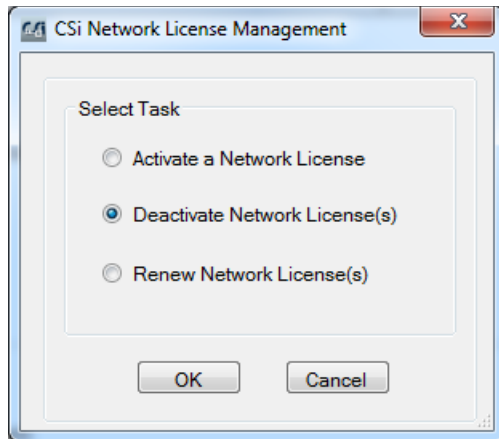
If you have other Network license Activation codes click on Next to repeat the process, otherwise click Close to exit.

License Deactivation

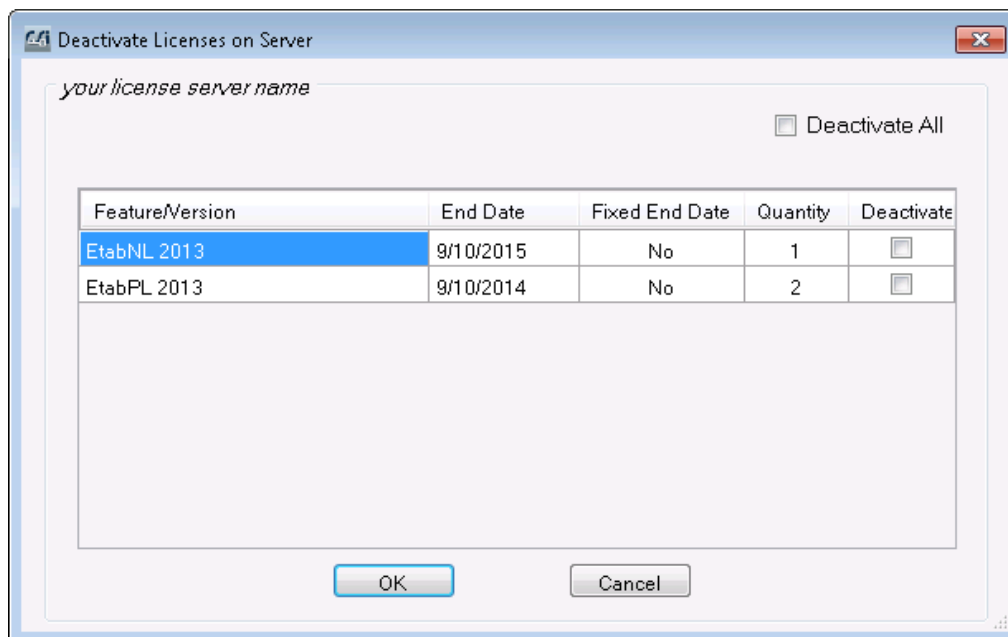
You can deactivate some or all of the licenses on a server and then move them to a different server.

Care should be taken to deactivate a license prior to uninstalling the license manager, reformatting the machine or performing any maintenance. If the license has not been deactivated properly you will not be able to use the license again.

Run NetKey and choose “Deactivate Network License(s)”:

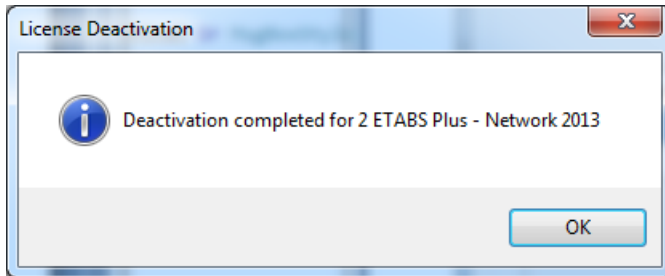


After you click OK the following window will be shown with information about the licenses you have activated on this server:

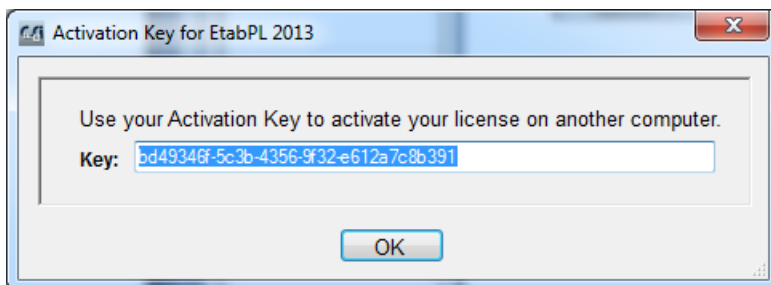


Check the appropriate box for which license(s) you want to deactivate and click OK.

The next screen confirms the number of licenses that have been deactivated and that can be moved to a different server. In this example, two “Plus” licenses were deactivated, leaving one “Ultimate” license on this server:



After you click OK a window will show the Activation key which can be used to activate the license on another server:

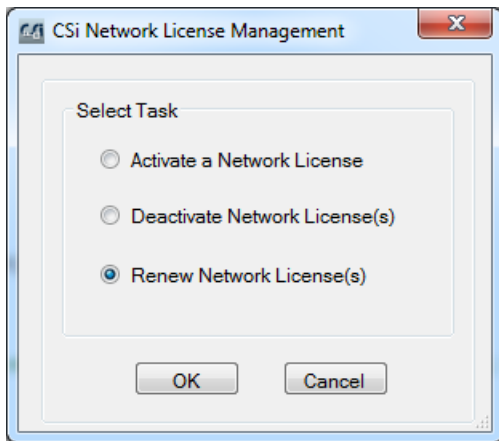


Note that you must deactivate all instances of a given license. However, you can reactive some of them on the same server. For example, if you want to deactivate only one of the “Plus” licenses in the above example, you would first deactivate both licenses, and then reactivate one of them. The other license can be activated on a different server.

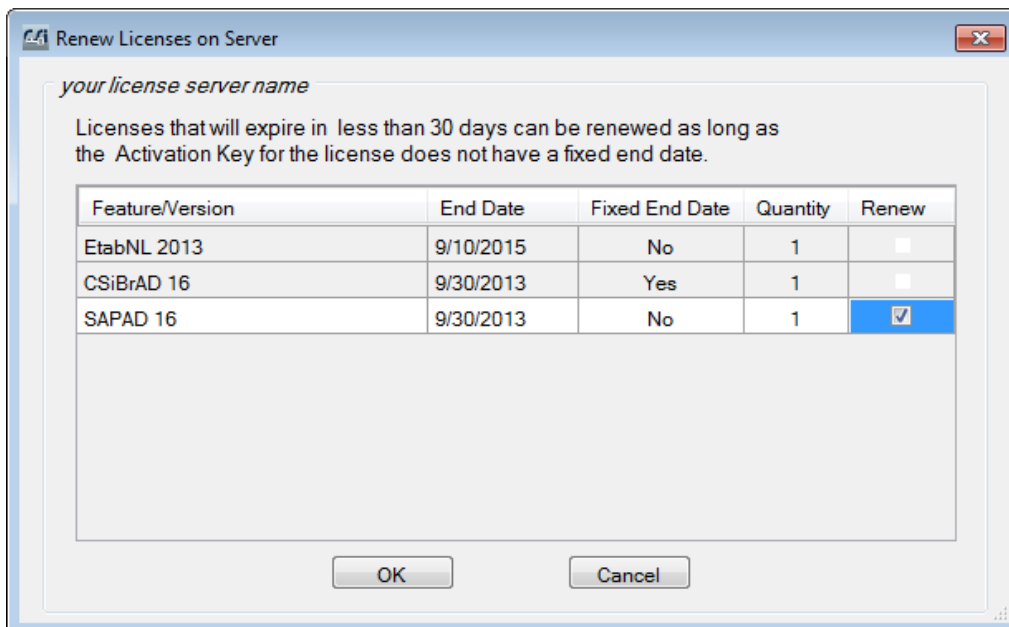
License Renewal

If there is a Network license which has 30 or fewer days left until it expires, or if it is already expired, you can use NetKey to renew the license. Note that running the software product itself will remind the user to renew the license being used if it is still active and has 30 or fewer days left until expiration.

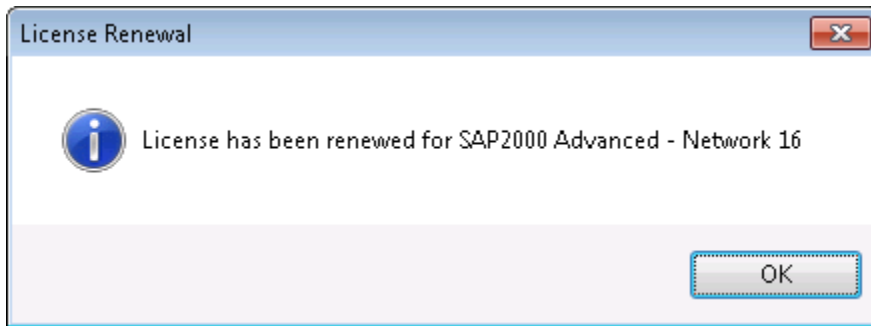
Run NetKey and choose “Renew Network License(s)”:



After you click OK the following window will be shown with information about the licenses you have on this server. If a license is available for renewal the check box will be enabled and you can check it as below:



Click OK and a confirmation window will appear showing that the license has been renewed:



Running Netkey again for renewal will then show that the license has been renewed and that there are no other licenses that need to be renewed at this time:

